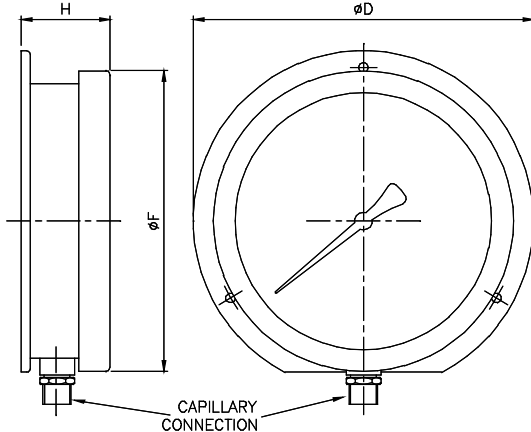


HYDROSTATIC GAUGE

Surface mounting hydrostatic gauge for use with the Landon Kingsway range of hydrostatic sensors. The 160mm diameter gauge is suitable for mounting in the Landon Kingsway range of fillpoint cabinets.

The 100 and 160mm gauges are also available in panel-mounting versions.

Dimensions



GAUGE SIZE (mm)	F FACE DIAMETER	D FLANGE DIAMETER	H BODY HEIGHT	MOUNTING HOLE PCD
100	112	132	51	116
160	172	195	51	176
250	250	N/A	55	270

INSTALLATION

Unpack the gauge ensuring that the blue plastic cap is NOT disturbed as this would cause the loss of the Nitrogen gas inside the gauge.

Fix the gauge to a vertical surface using the three mounting holes, or if using the panel mounting version use the supplied clips to fit the gauge into a panel cutout.

For sensor installation see the sensor datasheet.

To attach the capillary, remove the caps from the gauge and sensor, fit the supplied O-ring and tighten up the nut using a 20mm spanner. **Do not over tighten.**

Technical Specification

Materials	Stainless steel case, shatter, scratch resistant transparent window.
Dimensions	See Diagram
Sizes Available	100, 160, 250mm
Scale	Single/Dual Calibrated to requirements. Marking to M&E3 if reqd.

100mm Gauge

Mounting holes	Ø4.8mm
Panel cutout version	Ø100mm
Weight	0.8kg

160mm Gauge

Mounting holes	Ø5.5mm
Panel cutout version	Ø160mm
Weight	1.3kg

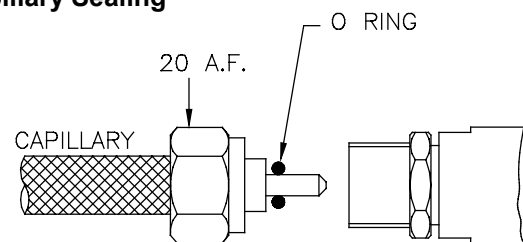
250mm Gauge

Mounting holes	Ø6.0mm
Weight	1.6kg

IMPORTANT POINTS

- Do NOT remove the cap from the capillary until ready to seal the system.
- The end of the capillary MUST be kept clean and dry until the system is sealed.
- Do NOT remove the end caps until ready to seal the system.

Capillary Sealing



If you have any questions or need any help then please contact our sales office.

Failure to follow these installation instructions will result in the warranty becoming void.