

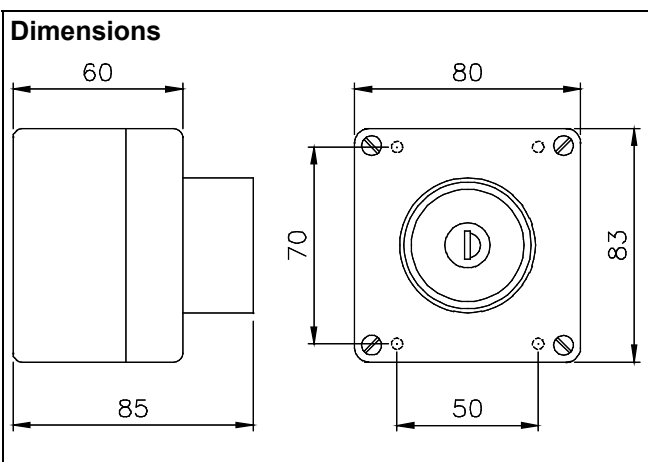
## KEY-RESET SWITCH

The key-reset emergency button has a variety of uses where it is required to have a latching push button that can only be reset by an authorised keyholder.

The switch has one set of normally closed contacts which may be used to cut the power to an item of machinery or to break the sensor loop of a fire control panel.

### Technical Specification

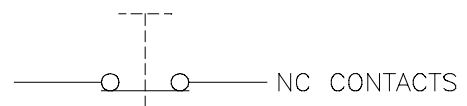
Enclosure	Grey ABS plastic, red button with chromed shield.
Dimensions	83 x 80 x 85mm
Fixing Centres	50 x 70mm Ø4mm
Protection Rating	IP65
Switch Rating	250V 50Hz, 4A
Wire Size	2x 2.5mm <sup>2</sup>
Conduit Connection	Ø20mm hole
Weight	0.3kg



### OPERATION

Once pressed the switch latches into position. The only way to reset the switch is to insert the key, turn it clockwise then back.

### Wiring Diagram



### INSTALLATION

The switch should be situated in an accessible location and must be clearly marked as an emergency button.

Four screw holes are provided in the base of the unit to allow wall mounting together with a pre-drilled conduit connection in one side of the enclosure.

Electrical connection of the switch should be carried out by competent persons in accordance with the wiring diagram.

If you have any questions or need any help then please contact our sales office.